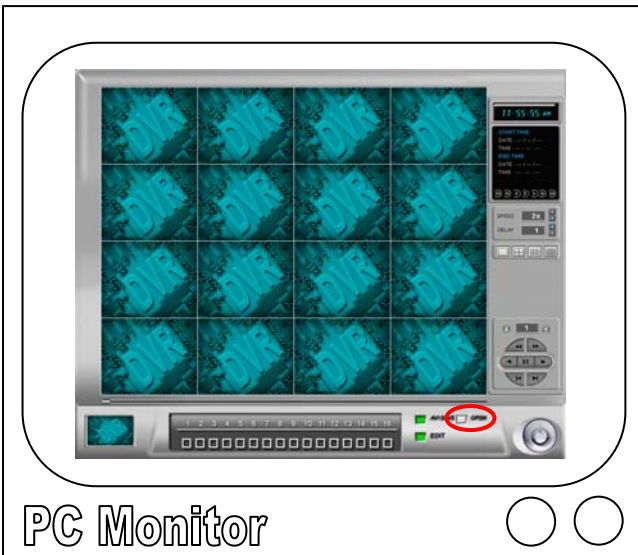


Playing Back From a CD Burned From a Silverline JPEG2000 DVR on your PC



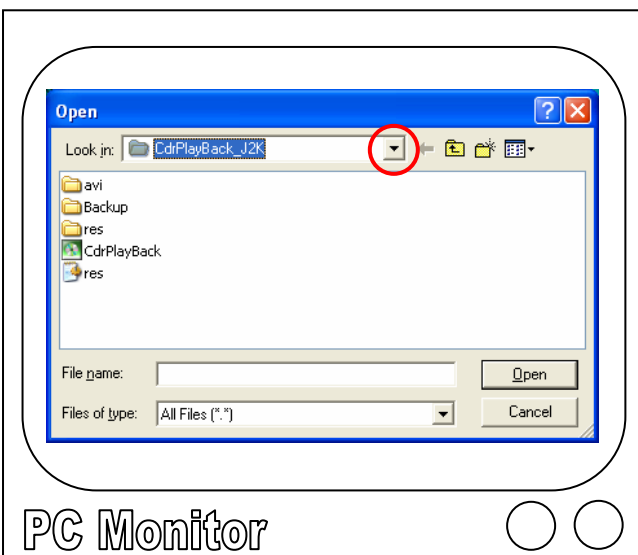
Install the CD Playback software to your PC from the DVR companion disc (consult the DVR user manual for details on how to do this). Make sure you install the correct version of the CD backup player (the Standard version if you have the advanced DVR or the Lite version if you have a Lite DVR).



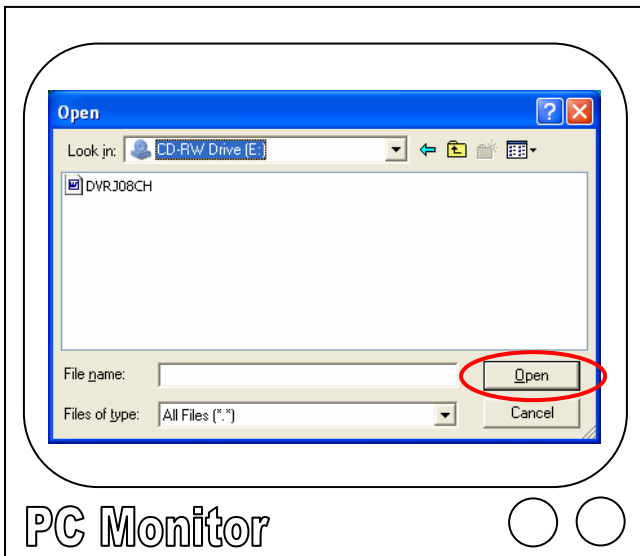
Once you have successfully burned your footage disc from the DVR and the correct playback software is installed, insert the footage disc into your PC CD-ROM drive.

Run the software by double clicking the **CD-R Backup Player J2K** or **CD-R Backup Player J2K-L** icon on your desktop.

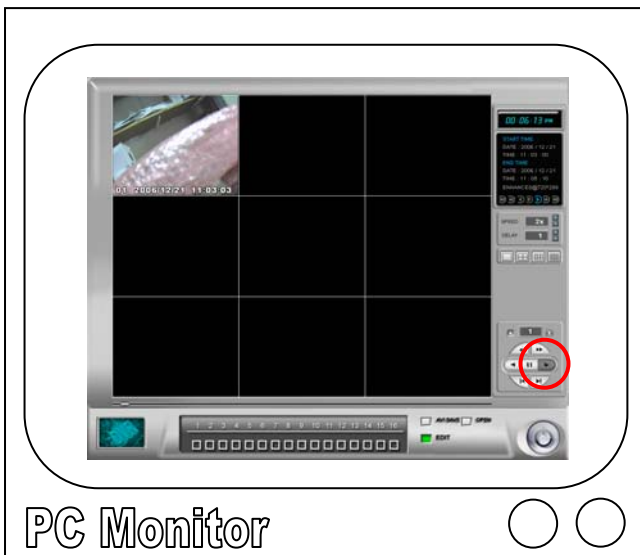
Once the program is open, this screen will appear. Click the **Open** button once.



On the **Open** dialog box, click the arrow on the **Look In** bar. This will bring down a list of files on your PC. Find your CD-ROM drive in the list and click it. The CD-ROM drive is usually labelled **D:**, however, it may be labelled differently depending on the setup of your PC.



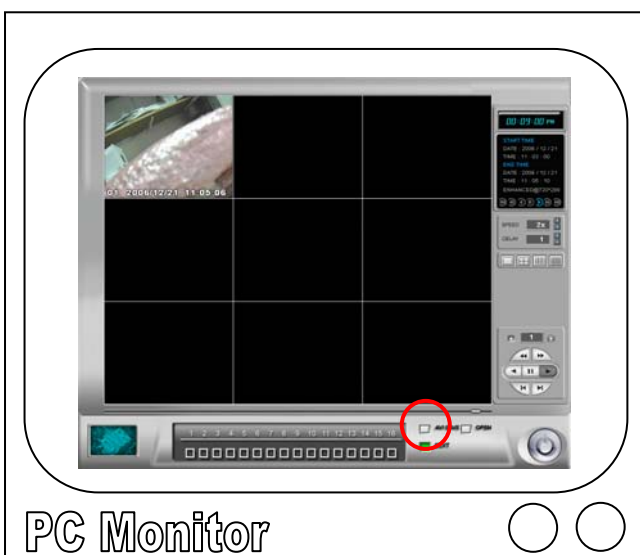
Once you have selected your CD drive, the footage file will be displayed in the main part of the **Open** dialog box. Highlight the file by clicking it once and then click the **Open** button once



The footage file will now be loaded onto your screen and paused at the beginning of the playback. Click the **Play** button on the main screen to begin the playback.

You can fast forward, pause, rewind and stop the recording all from the control panel on the right hand side of the window.

You can also change the way the screens are displayed by using the multiplex buttons on the right hand side.



You can save the footage as an AVI file so that it can be played back through Windows Media Player by clicking the **AVI Save** button near the bottom of the screen. This will only record exactly what is being display currently, you will not be able to multiplex by playing back an AVI file.

When you are finished, close the CD Backup Player by clicking the **Power** button once at the bottom right of the window.